



NUMERACY BULLETIN

ISSUE 12

APRIL 2023

MATHS EVENTS THIS MONTH!

FAMILY MATHS EVENINGS

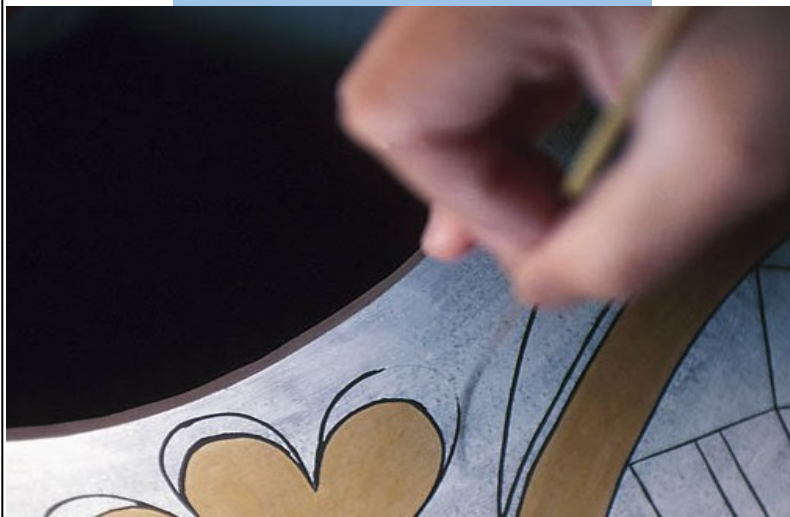
Every Monday and Tuesday evenings from 5.30pm until 7pm

New ks3 maths homework club in room 48 Tuesdays 12.40 to 1pm.

TEACHER ON THE SPOT!

Mrs Tulbure and Mrs Breeze share some money in the ratio 5:8. Mrs Breeze receives £33 more than Mrs Tulbure. How much did each person receive?

CAREERS USING NUMERACY



REAL LIFE SKILLS!



NUMERACY CHAMPION!

Mathswatch Champions this month are ...

Year 7 Ayaan C

Year 8 Alfie P

Year 9 Jannat A

Year 10 Omar A

Year 11 Talha M

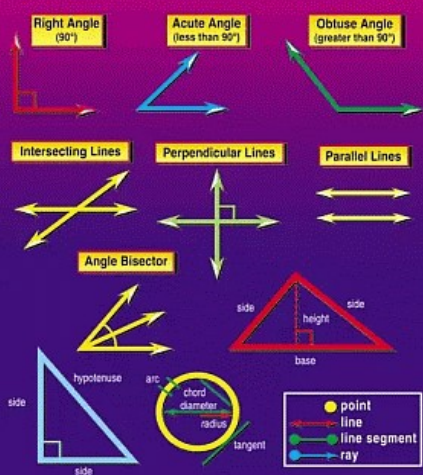
STAFF: WHAT CAN I DO?

1. Talk aloud of strategies to solve problems.
2. Challenge students on the weekly tables.
3. Include maths in your lessons whenever possible.

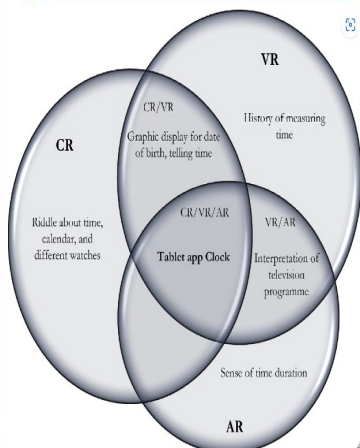
PARENTS: WHAT CAN I DO?

1. Challenge your child on weekly tables.
2. Encourage your child to complete homework.
3. Encourage/direct your child to the school Numeracy page.

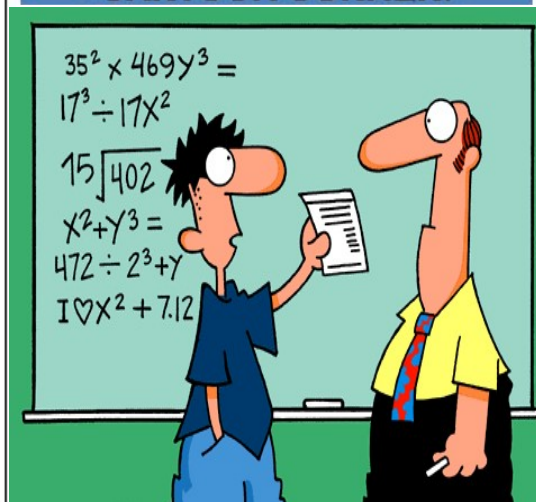
ANGLES AND LINES



CROSS CURRICULAR!



CARTOON CORNER!



Accelerating melt of ice sheets now 'unmistakable'

An international group of scientists who work with satellite data say the acceleration in the melting of Earth's ice sheets is now unmistakable.

They say if you could shape an ice cube out of all the ice losses from Greenland and Antarctica over the past three decades, it would stand 20 kilometres high.



(a) What would the volume of this ice cube be in cubic kilometres?

****CHALLENGE****

(b) Can you work out the volume in cubic metres? Give your answer in WORDS.

'Legacy blue checks' disappear from Twitter as Musk's changes take effect

Blue checkmarks began to disappear from formerly verified Twitter accounts on Thursday, as policies implemented under new owner Elon Musk began to take hold.

Now users seeking verification will have to pay for Twitter Blue, a controversial \$8 a month subscription program under which any account can obtain a blue checkmark, not just celebrities!

Shown below are the top 5 most followed Twitter accounts. The answer to the maths clue corresponds to the letter of the alphabet it corresponds to, e.g. a = 1, b = 2, c = 3, etc.

Top 5 Most Followed Twitter Accounts

1. $20 \div 4$ _ _ _ / _ _ _
2. $-5 + 7$ _ _ _ _ / _ _ _
3. $2 - (-8)$ _ _ _ _ / _ _ _
4. 6×3 _ _ _ _
5. $\sqrt{9}$ _ _ _ _ / _ _ _

How many Twitter accounts can you work out???

TECHNOLOGY

Sport

Dumfries runner disqualified after using car to complete a race

A Dumfries runner has been disqualified from a 50 mile race after using a car for part of the route.

She finished third in the 2023 GB Ultras Manchester to Liverpool event but was discovered to have travelled by car for 2.5 miles.

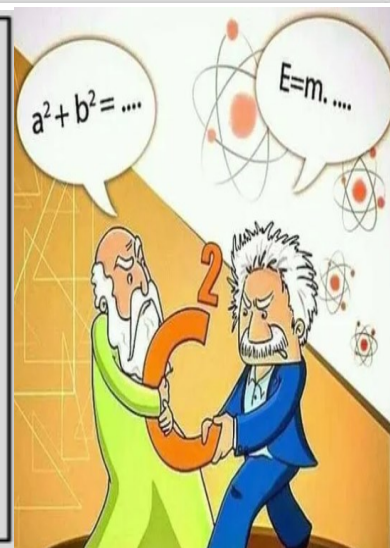
(a) How much of the race did she actually run?

The runner stated she used the car because she became lost on the course near the half way mark and wanted to pull out as she felt sick and jet lagged after arriving from Australia the night before the race.

In February this year, she did break the World Record for a 48 hour race where completed a 628 metre loop 654 times at the Taipei Ultramarathon in Taiwan.

(a) How many metres did she run altogether?

(b) On average, how many kilometres did she run per hour?



NUMERACY COMPETITION!

Hand your entries to your maths teacher before the end of March for chance of winning a prize! Don't forget your name and form

Simplify $\frac{32}{80}$	Find y $\frac{32 + y}{108} = 1$	Find x $18x = 6$
Write $\frac{70}{100}$ as a decimal	7 is a factor of 294. True or False?	$1 - 2 \times 0.25$
Find $\frac{3}{8}$ of 640	Write down the value of the 4 in the number 542.3	Work out the cube root of 64.